



# Retail For Lease

## Greeley Building



**Ryan Koppy**  
Phone: (314) 620-5542  
Ryan@TradingPostRE.com

620 N 2nd St.  
St. Louis, MO 63102  
706 RSF | \$20.00/SF | T.I. Available



## Property Information



Once home to the "dry" grocery house of Carlos S. Greeley, The Greeley Building's cast-iron facade was re-exposed in 1980 bringing a bit of history back to life. Just over 40 years later the building has been repurposed and re-exposed again now housing 36 luxury apartment units and over 20,000 square feet of Office and retail space including a rooftop venue with unrivaled views of the Gateway Arch National park, historic Eads Bridge, and the Mississippi River.

## Highlights

- Rooftop Venue with Gateway Arch and Mississippi River Views
- 20' Ceilings with 18' Entryway Doors
- Historic Renovation Completed in 2023
- Home to 36 Luxury Apartments ([More Info](#)).
- 706 RSF, Asking \$20.00/SF
- Street Level Entry
- T.I. Available
- [GSL Retail Incentives \(More Info\)](#).



GREELEY  
BUILDING

Ryan Koppy

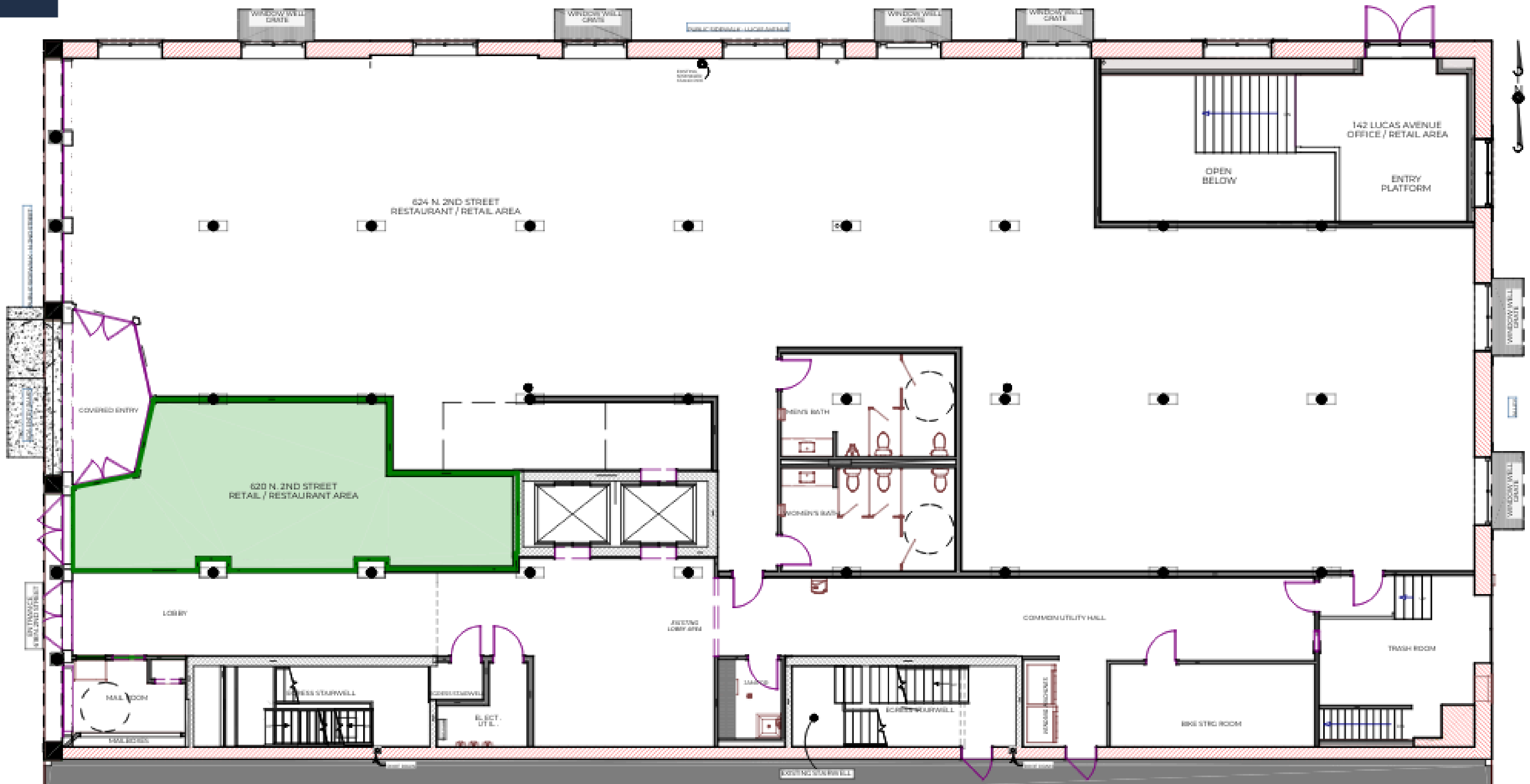
Phone: (314) 620-5542  
Ryan@TradingPostRE.com

620 N 2nd St.  
St. Louis, MO 63102  
706 RSF | \$20.00/SF | T.I. Available

SCAN HERE!



## First Floor




## Incentives

### The NEW Laclede's Landing

- 129 New Luxury Apartments Between MLK Bridge and Eads Bridge (More Info)
- Katherine Ward Burg Garden
- Laclede's Landing Dog Park
- Mississippi River Greenway
- Neighborhood Events:
  - Lunch on the Landing
  - Battlehawks Tailgates
  - Arch Bark
  - Greater St. Louis Marathon
  - 4th of July on the Arch
  - Big Muddy Blues Festival
  - Blues at the Arch

GSL Rental Incentives

**GREATER ST. LOUIS INC.**




GREELEY  
BUILDING

**Ryan Koppy**

Phone: (314) 620-5542  
Ryan@TradingPostRE.com

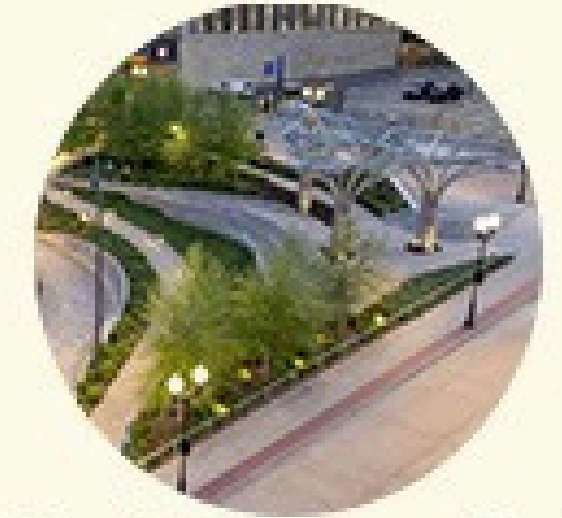
620 N 2nd St.  
St. Louis, MO 63102  
706 RSF | \$20.00/SF | T.I. Available

SCAN HERE!



# Retail For Lease

Aerial



J. Katherine Ward Burg Garden



I. Horseshoe Casino, 7 Min Walk



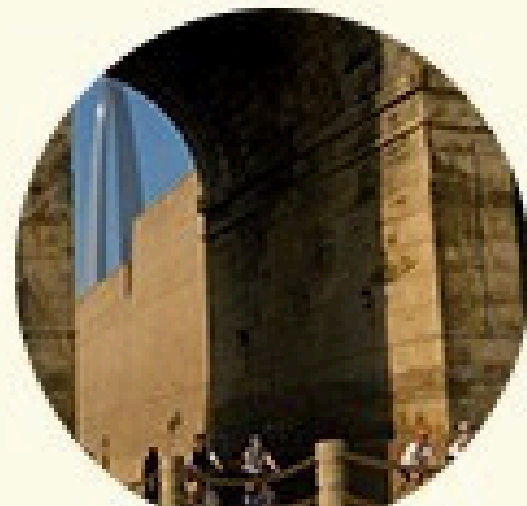
H. Gateway Arch Park, 5 Min Walk



A. Greeley Building



B. Kimchi Guys



C. Mississippi Greenway



D. Dog Park, 3 Min Walk



E. The Dome, 7 Min Drive



F. The Cobblestone STL



G. Bush Stadium, 15 Min Walk



GREELEY BUILDING

Ryan Koppy

Phone: (314) 620-5542  
Ryan@TradingPostRE.com

620 N 2nd St.  
St. Louis, MO 63102  
706 RSF | \$20.00/SF | T.I. Available

SCAN HERE!

