



Restaurant For Lease

Greeley Building



**GREELEY
BUILDING**

Ryan Koppy

Phone: (314) 620-5542
Ryan@TradingPostRE.com

624 N 2nd St.
St. Louis, MO 63102
10,792 RSF | \$22.30/SF | T.I. Available

SCAN HERE!



Property Information



Once home to the "dry" grocery house of Carlos S. Greeley, The Greeley Building's cast-iron facade was re-exposed in 1980 bringing a bit of history back to life. Just over 40 years later the building has been repurposed and re-exposed again now housing 36 luxury apartment units and over 20,000 square feet of Office and retail space including a rooftop venue with unrivaled views of the Gateway Arch National park, historic Eads Bridge, and the Mississippi River.

Highlights

- Rooftop Venue with Gateway Arch and Mississippi River Views
- 20" Ceilings with 18' Entryway Doors
- Historic Renovation Completed in 2023
- Home to 36 Luxury Apartments ([More Info](#))
- 10,792 RSF (Combined 1st floor and Rooftop), Asking \$22.30/SF
- Street Level Entry
- Direct Elevator Access to Rooftop
- Hood Chase Available
- T.I. Available
- GSL Retail Incentives ([More Info](#)).



**GREELEY
BUILDING**

Ryan Koppy

Phone: (314) 620-5542
Ryan@TradingPostRE.com

624 N 2nd St.
St. Louis, MO 63102

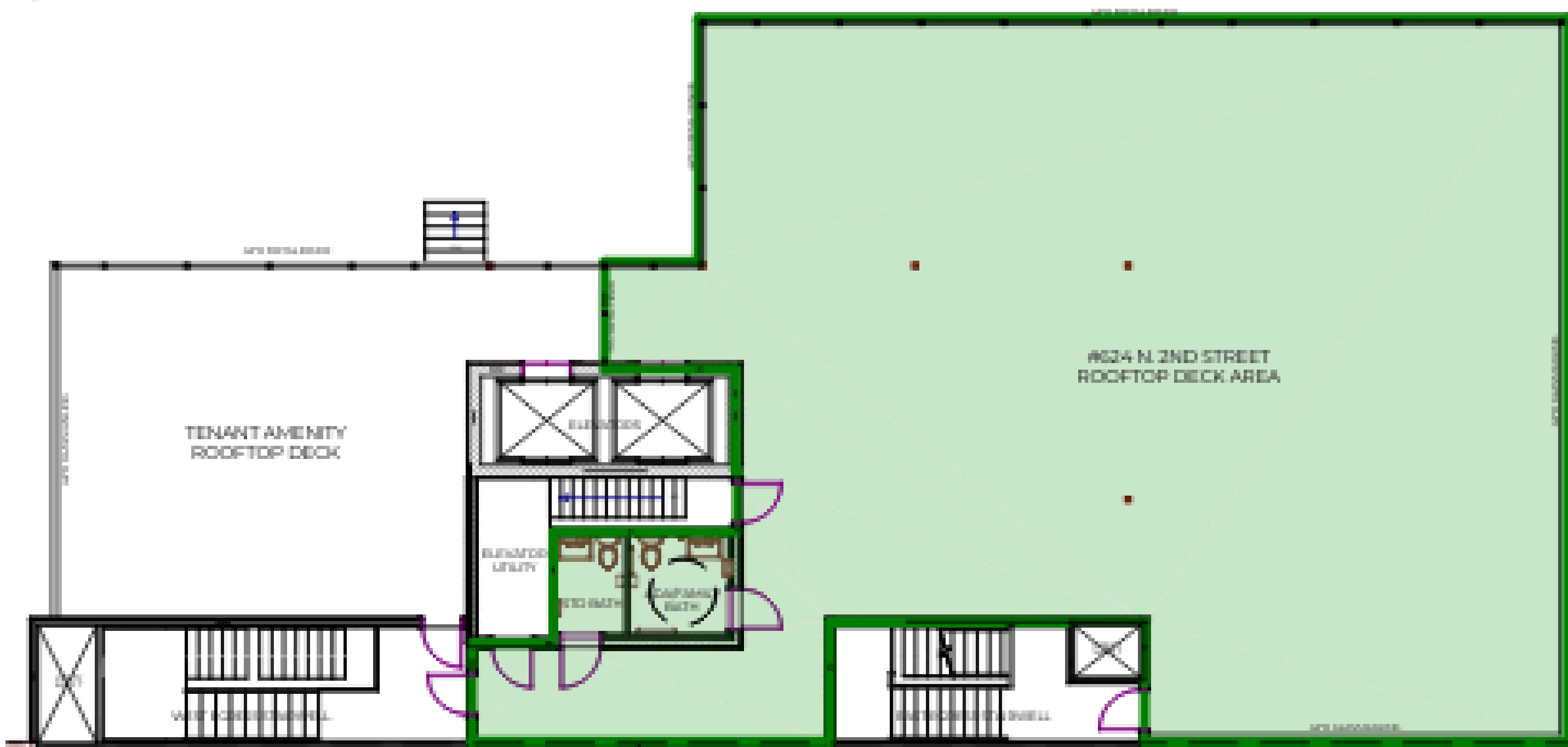
10,792 RSF | \$22.30/SF | T.I. Available

SCAN HERE!



Roof Top

Rooftop Plan:



Ryan Koppy
Phone: (314) 620-5542
Ryan@TradingPostRE.com

624 N 2nd St.
St. Louis, MO 63102
10,792 RSF | \$22.30/SF | T.I. Available





Restaurant For Lease

Rendering



Ryan Koppy

Phone: (314) 620-5542
Ryan@TradingPostRE.com

624 N 2nd St.
St. Louis, MO 63102
10,792 RSF | \$22.30/SF | T.I. Available

SCAN HERE!

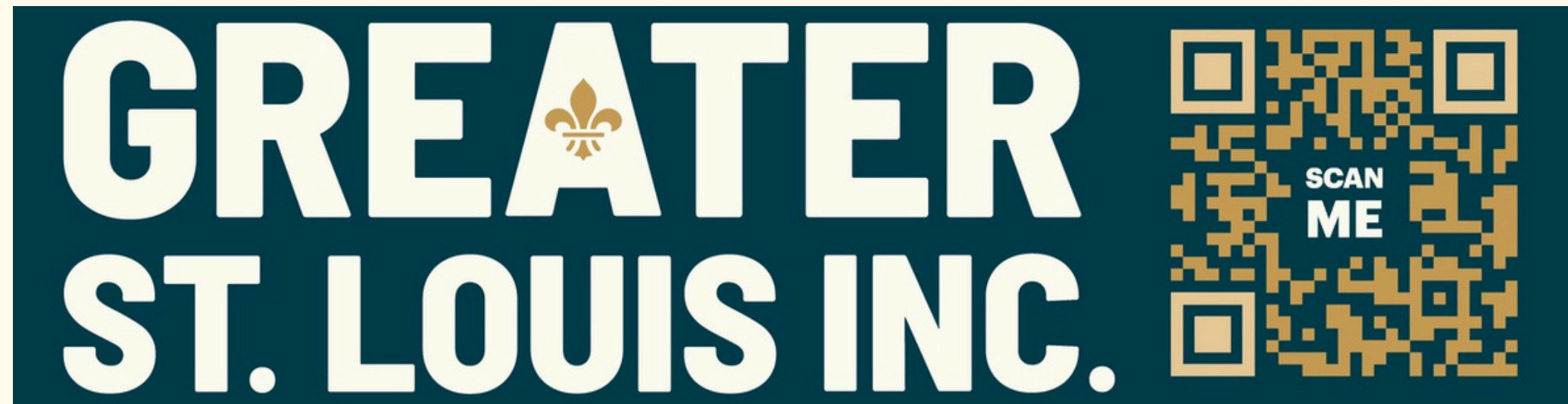


Incentives

The NEW Laclede's Landing

- 129 New Luxury Apartments Between MLK Bridge and Eads Bridge ([More Info](#))
- Katherine Ward Burg Garden
- Laclede's Landing Dog Park
- Mississippi River Greenway
- Neighborhood Events:
 - Lunch on the Landing
 - Battlehawks Tailgates
 - Arch Bark
 - Greater St. Louis Marathon
 - 4th of July on the Arch
 - Big Muddy Blues Festival
 - Blues at the Arch

GSL Rental Incentives



**GREELEY
BUILDING**

Ryan Koppy

Phone: (314) 620-5542
Ryan@TradingPostRE.com

624 N 2nd St.
St. Louis, MO 63102
10,792 RSF | \$22.30/SF | T.I. Available

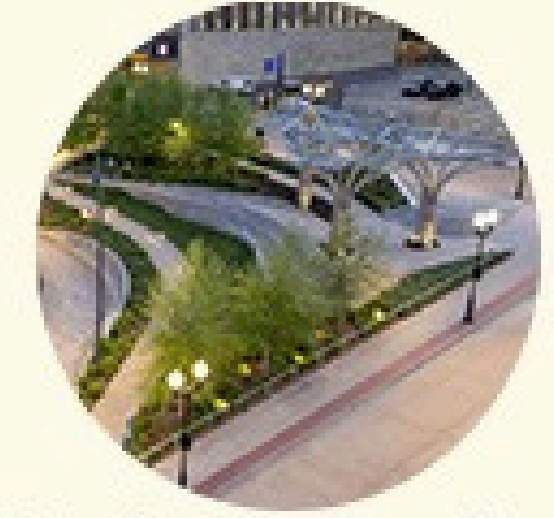
SCAN HERE!



Restaurant For Lease



Aerial



J. Katherine Ward Burg Garden



I. Horseshoe Casino, 7 Min Walk



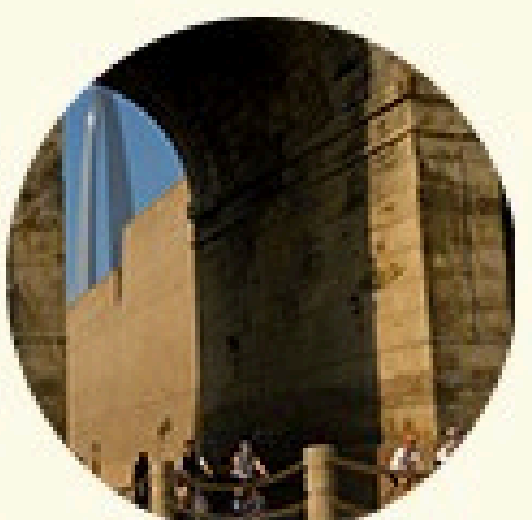
H. Gateway Arch Park, 5 Min Walk



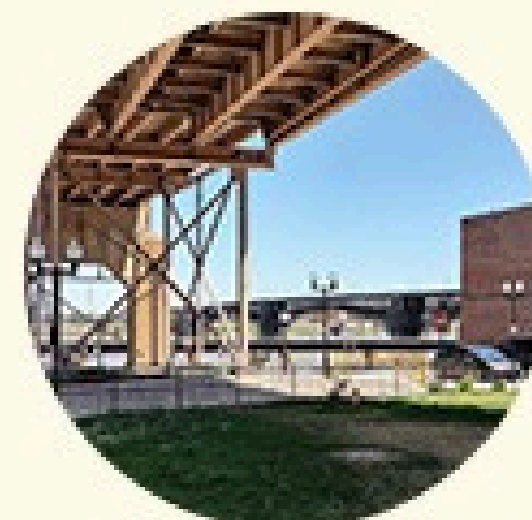
A. Greeley Building



B. Kimchi Guys



C. Mississippi Greenway



D. Dog Park, 3 Min Walk



E. The Dome, 7 Min Drive



F. The Cobblestone STL



G. Bush Stadium, 15 Min Walk



Ryan Koppy
 Phone: (314) 620-5542
 Ryan@TradingPostRE.com

624 N 2nd St.
 St. Louis, MO 63102
 10,792 RSF | \$22.30/SF | T.I. Available

SCAN HERE!

