

Office For Lease

Peper Building



Ryan Koppy

Phone: (314) 620-5542
Ryan@TradingPostRE.com

701 N 1st St, Suite 103
St. Louis, MO 63102
2,031 RSF | \$17/SF | T.I. Available

SCAN HERE!



Property Information



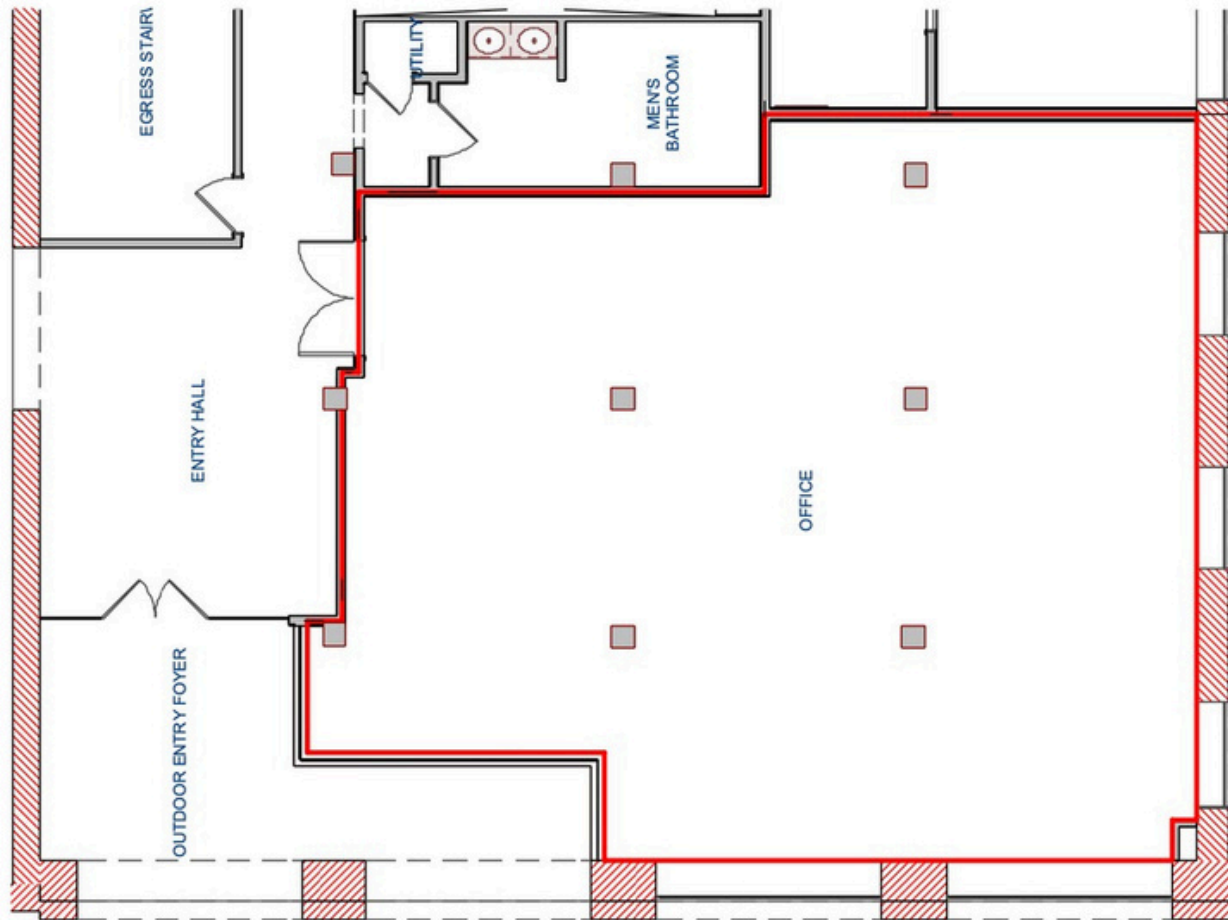
Built in 1883 to support the growing tobacco industry in St. Louis, the Christian Peper building housed and dried valuable tobacco leaves for processing during the turn of the 20th century. Today, the building has been tastefully updated and enhanced for modern use. Today the building houses 52 residential apartments and over 35,000 sf of Office and retail space. The fully renovated building is a modern mixed use building offering spectacular views of the Mississippi River and iconic Gateway Arch, from the birthplace of St. Louis in historic Laclede's Landing. Upscale amenities and thoughtful finishes blend historic design elements with modern conveniences that sit underneath a beautiful rooftop deck that provides one of the greatest views in the city.

Highlights

- Historic Renovation Completed in 2019
- Exposed Bricks Walls and Wooden Beams
- Central Atrium Full Gym With Showers and Lockers
- Rooftop Deck with Gateway Arch and Mississippi River Views
- Home to 52 Luxury Apartments ([More Info](#))
- 2,031 RSF, Asking \$17/SF
- Elevator Access to Rooftop
- T.I. Available
- Business Grants Available ([More Info](#))



First Floor



Ryan Koppy

Phone: (314) 620-5542
Ryan@TradingPostRE.com

701 N 1st St, Suite 103
St. Louis, MO 63102
2,031 RSF | \$17/SF | T.I. Available

SCAN HERE!



Office For Lease

Rooftop



Ryan Koppy

Phone: (314) 620-5542
Ryan@TradingPostRE.com

701 N 1st St, Suite 103
St. Louis, MO 63102
2,031 RSF | \$17/SF | T.I. Available

SCAN HERE!



Incentives

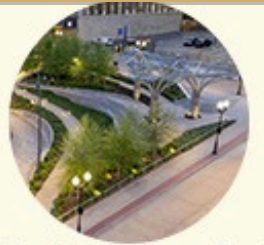
The NEW Laclede's Landing

- 129 New Luxury Apartments Between MLK Bridge and Eads Bridge ([More Info](#))
- Katherine Ward Burg Garden
- Laclede's Landing Dog Park
- Mississippi River Greenway
- Neighborhood Events:
 - Lunch on the Landing
 - Battlehawks Tailgates
 - Arch Bark
 - Greater St. Louis Marathon
 - 4th of July on the Arch
 - Big Muddy Blues Festival
 - Blues at the Arch

GSL Rental Incentives



Office For Lease



J. Katherine Ward Burg Garden



I. Horseshoe Casino, 7 Min Walk



H. Gateway Arch Park, 5 Min Walk



A. Peper Building



B. Kimchi Guys



C. Mississippi Greenway



D. Dog Park, 3 Min Walk



E. The Dome, 7 Min Drive



F. The Cobblestone STL



G. Bush Stadium, 15 Min Walk



Ryan Koppy

Phone: (314) 620-5542
Ryan@TradingPostRE.com

701 N 1st St, Suite 103
St. Louis, MO 63102
2,031 RSF | \$17/SF | T.I. Available

SCAN HERE!

