

Office For Lease

Wilkinson Building
- Suite B -



WILKINSON
BUILDING

Ryan Koppay

Phone: (314) 620-5542
Ryan@TradingPostRE.com

7135 Canterbury Ave, Suite B
St. Louis, MO 63143
1,492 RSF | \$16.50/SF | T.I. Available

SCAN HERE!



Property
Information



A former Saint Louis Public School, The Wilkinson Building has been transformed into a stunning mixed use multifamily structure featuring 34 tastefully updated apartments and two commercial retail or office spaces. The central location combined with ample parking paves the way for a variety of uses. Get your business located today by scheduling a property tour.

Highlights

- First Floor Retail
- Centrally Located
- Ample Parking
- Located Near High-Traffic Corridor
- 1,492 RSF, Asking \$16.50/SF
- T.I. Available



WILKINSON
BUILDING

Ryan Koppy

Phone: (314) 620-5542
Ryan@TradingPostRE.com

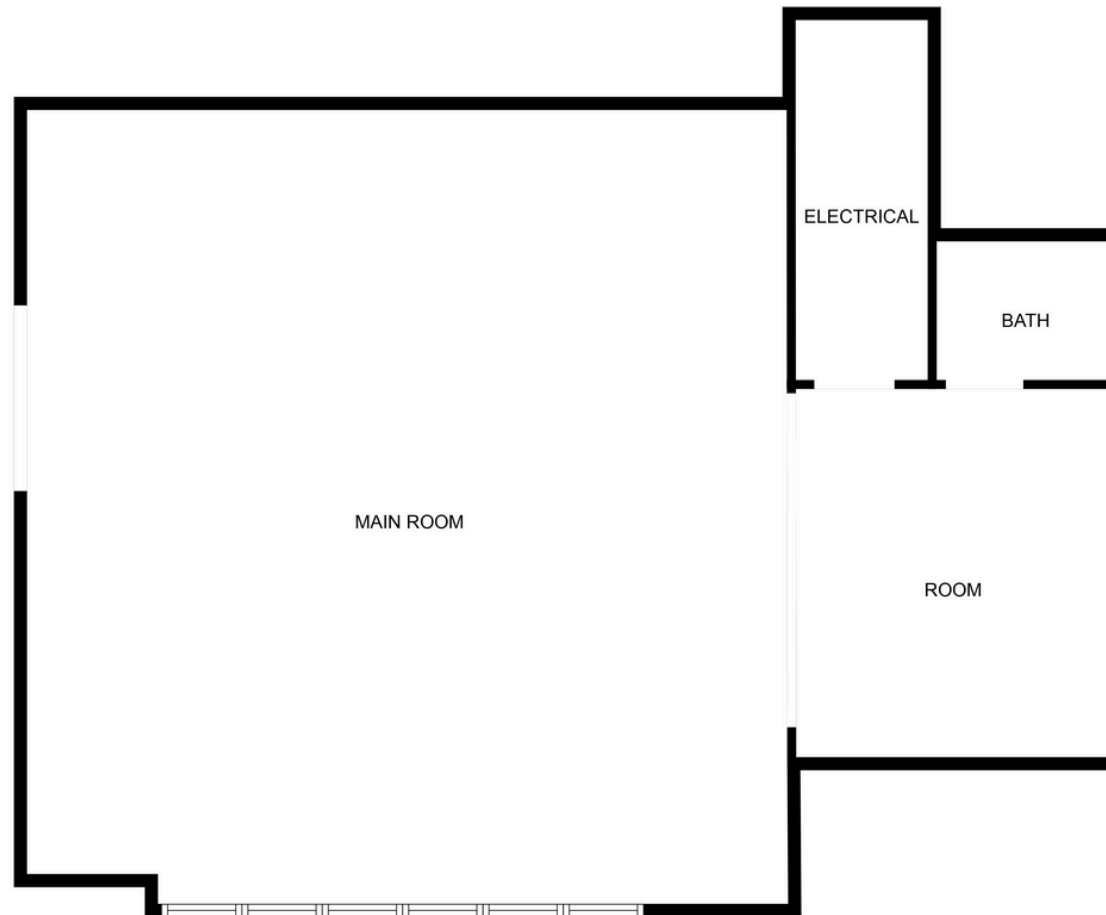
7135 Canterbury Ave, Suite B
St. Louis, MO 63143

1,492 RSF | \$16.50/SF | T.I. Available

SCAN HERE!



First Floor



WILKINSON
BUILDING

Ryan Kopyy

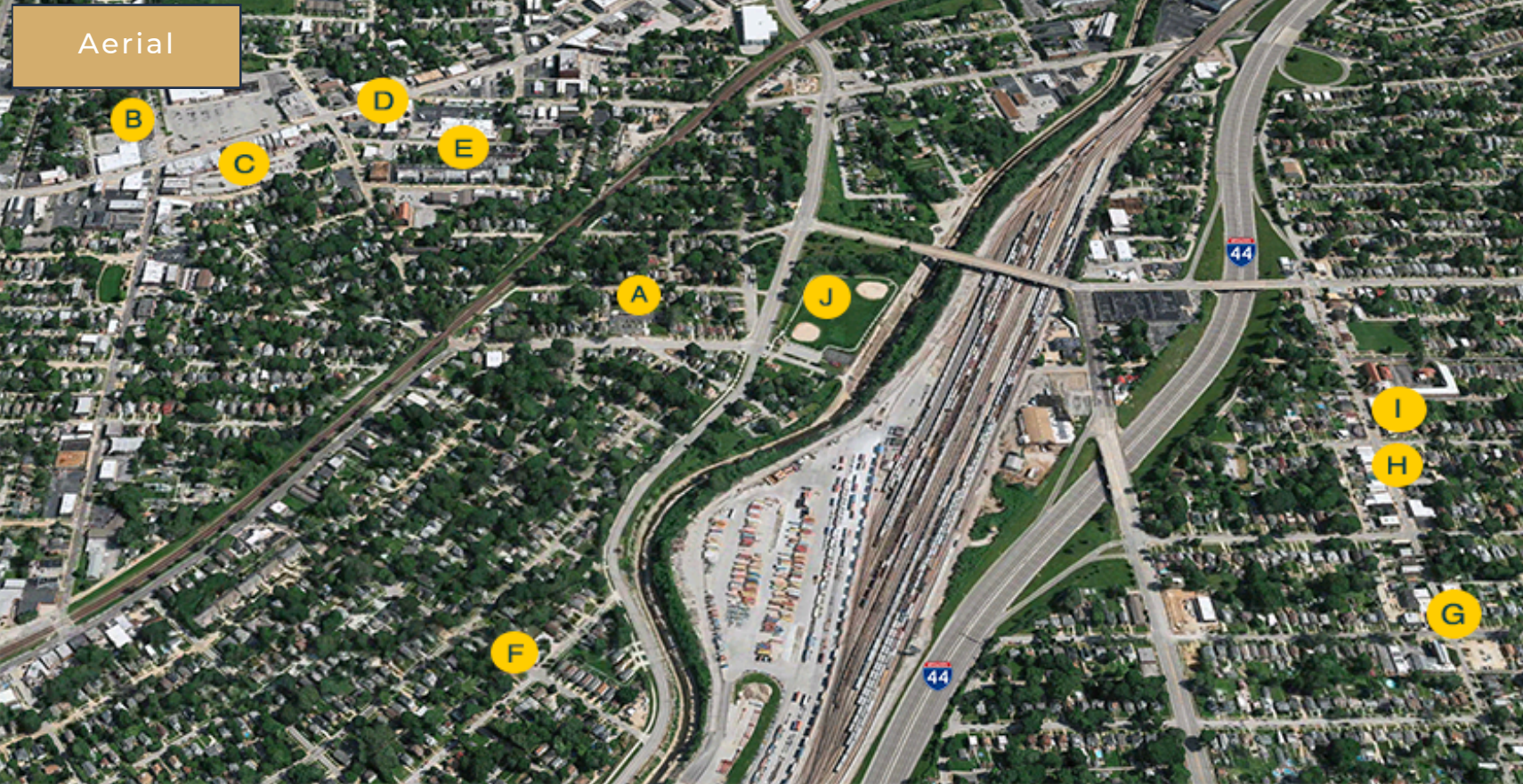
Phone: (314) 620-5542
Ryan@TradingPostRE.com

7135 Canterbury Ave, Suite B
St. Louis, MO 63143
1,492 RSF | \$16.50/SF | T.I. Available

SCAN HERE!



Aerial



J. Francis R. Slay Park



I. Vinnie's Italian Beef



H. Babe's Tavern



A. Wilkinson Building



B. The Blue Duck



C. Boogaloo Restaurant



D. Acero Ristorante



E. Schlafly Bottleworks



F. The Piccadilly



G. Farmhaus Restaurant



WILKINSON
BUILDING

Ryan Kopyy

Phone: (314) 620-5542
Ryan@TradingPostRE.com

7135 Canterbury Ave, Suite B
St. Louis, MO 63143
1,492 RSF | \$16.50/SF | T.I. Available

SCAN HERE!

